



DDL® Ring-Seal Lu-GT Modular Wall-Penetrations

Ring-Seal



DDL®

Durchführungstechnik
Dichtsysteme
Lutz

web www.ddl-dichttechnik.de
fon (+49) 07163 1657-40
fax (+49) 07163 1657-41
mail vertrieb@ddl-dichttechnik.de

DDL Annular-Space-Seals Lu-GT

with the Original **DDL**® Ring-Seal Modular-Seals

Installation in Core-Bearing-Holes



Installation in Sleeves



Installation in Casing-Pipes



DDL Ring-Seal Wall-Penetrations and Pipe-Sealing-Sets

When pipes or cables pass walls, floors or ceilings it must be ensured, that the penetrations are permanent sealed against liquids and gas.

Wall-Penetrations and sealing-sets enable a simple, fast and proper pass-through of installed pipes or cables.

The modular-sealings are pressure-tightend and additionally prevent the transfer of temperature and noise.



- Sealing-Sets for pipes and cables against water-pressure and gas
- Sealing-Sets for pipes and cables against aggressive surroundings
- Sealing-Sets for pipes in potable-water-systems
- Sealing-Sets for acoustic requirements according to Spec DIN 4109
- Sealing-Sets for installation in existing pipe-systems (chains are divisible)

Product-Properties DDL Ring-Seal Lu-GT Modular-Seals

Gapless Modul-
Connection-Sections



Bolts, Nuts, Washers
corrosion protected



Circumferential AquaStop
Safty-Groove



Non-rotatable
Pressure-Plates



Simply and fast divisible



Product-Range DDL Ring-Seal Lu-GT

Lu-GT 20



1-Ply Sealing-Set against water-/gas-pressure up to 2 bars according to Spec DIN 3230 Part 5

Lu-GT 50



2-Ply Sealing-Set against water-/gas-pressure up to 5 bars according to Spec DIN 3230 Part 5

Lu-GT epdm



Standard EPDM-Rubber with high resistance against common surroundings with a temperature-range of -40°C to $+120^{\circ}\text{C}$

Lu-GT nbr



Nitrile-Rubber with resistance against oil, grease, fuel and many different solvents with a temperature-range of -30°C to $+100^{\circ}\text{C}$

Lu-GT sil



Silicone-Rubber for extreme temperature-ranges of -55°C to $+230^{\circ}\text{C}$

Lu-GT ktw



All materials are according to Spec KTW/W270 for contact with potable-water

Lu-GT vz



Steelparts galvanized

Lu-GT va



Steelparts stainless-steel

Typical Installation Schematics for DDL Ring-Seal Sealing-Sets and Wall-Penetrations

Lu-GT 20



Lu-GT 50

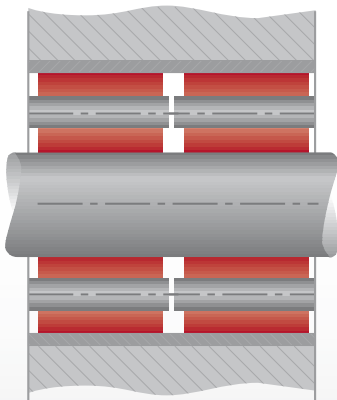


Lu-GT (divisible)



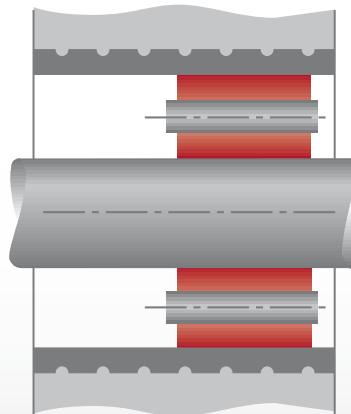
Common Installations

Core-Bearing-Holes



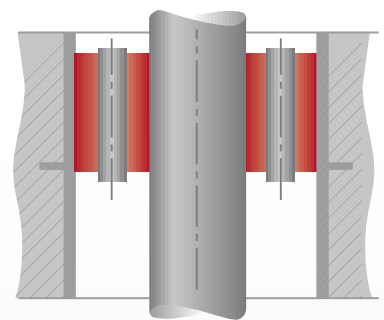
Wall installation in core-bearing-holes with 2 sealing-sets at end-position

Sleeves



Wall installation in sleeves with 1 sealing-set at end-position

Ceilings



Ceiling installation in casings with 1 sealing-set at end-position

Annular-Space-Seals Original DDL Ring-Seal Lu-GT Modular-System

Lu-GT Selection-Software
at www.ddl-dichttechnik.de



20 m WS

Installation Dimensions

Version	Annular-Space [mm]	Carrier-Pipe-OD [mm]	min. Wallthickness [mm]
Lu-GT 200	12,5 - 15,9	21,3 - 323,9	40
Lu-GT 250	15,5 - 19,6	13,0 - 358,0	40
Lu-GT 275	15,5 - 19,6	4,0 - 67,1	40
Lu-GT 300	17,5 - 22,4	44,5 - 406,4	55
Lu-GT 325	23,0 - 29,8	88,9 - 711,0	80
Lu-GT 350	23,5 - 30,6	14,0 - 406,4	60
Lu-GT 375	31,0 - 36,5	26,0 - 323,9	70
Lu-GT 400	36,0 - 43,5	139,7 - 1220,0	90
Lu-GT 415	36,0 - 43,5	44,5 - 323,9	90
Lu-GT 425	28,0 - 35,5	134,0 - 1220,0	90
Lu-GT 475	40,0 - 47,5	33,7 - 1220,0	90
Lu-GT 500	58,0 - 68,5	82,5 - 1220,0	110
Lu-GT 525	53,0 - 61,3	133,0 - 1220,0	110
Lu-GT 575	47,0 - 56,8	90,0 - 1220,0	90
Lu-GT 600	80,0 - 96,5	177,8 - 3000,0	140
Lu-GT 650	71,0 - 81,5	200,0 - 1220,0	110

Annular-Space-Seals Original DDL Ring-Seal Lu-GT 50 Modular-System

Lu-GT Selection-Software
at www.ddl-dichttechnik.de



50 m WS

Installation Dimensions

Version	Annular-Space [mm]	Carrier-Pipe-OD [mm]	min. Wallthickness [mm]
Lu-GT 200	12,5 - 17,0	21,3 - 323,9	70
Lu-GT 250	15,5 - 21,0	13,0 - 358,0	70
Lu-GT 275	15,5 - 21,0	4,0 - 67,1	70
Lu-GT 300	17,5 - 24,0	44,5 - 406,4	90
Lu-GT 325	23,0 - 32,0	88,9 - 711,0	110
Lu-GT 350	23,5 - 33,0	14,0 - 406,4	110
Lu-GT 375	31,0 - 40,0	26,0 - 323,9	110
Lu-GT 400	36,0 - 46,0	139,7 - 1220,0	140
Lu-GT 415	36,0 - 46,0	44,5 - 323,9	140
Lu-GT 425	28,0 - 38,0	134,0 - 1220,0	140
Lu-GT 475	40,0 - 50,0	33,7 - 1220,0	140
Lu-GT 500	58,0 - 72,0	82,5 - 1220,0	150
Lu-GT 525	53,0 - 64,0	133,0 - 1220,0	150
Lu-GT 575	47,0 - 60,0	90,0 - 1220,0	140
Lu-GT 600	80,0 - 102,0	177,8 - 3000,0	190
Lu-GT 650	71,0 - 85,0	200,0 - 1220,0	160

Accessories

Sleeves



PQZ-Concrete-Sleeves are free of asbestos and made of Polymeric-Silicasand-Cement

The water-stop groove-dimensions and the dimensions and tolerances overall are according to the specification of one of the largest german water-supply-companies

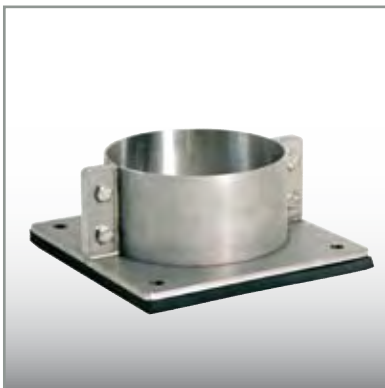
Design:

Circumferential grooves
for additional protection
against water-penetration

Dimensions:

- ID DN 80 bis DN 1200 mm
- length 100 to 1000 mm
- lengthwise cut possible

Sealing-Device in front of Wall



Steeldevices according to Spec 18195 Part 9 for walls with foilcovering or bitumen-coating

Design:

- Front-wall-sleeve
- Loos-type and fix-type flanges
- Divisible version possible
- Multiple-penetration version possible

BetonFinish for Core-Bearing-Holes



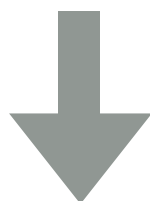
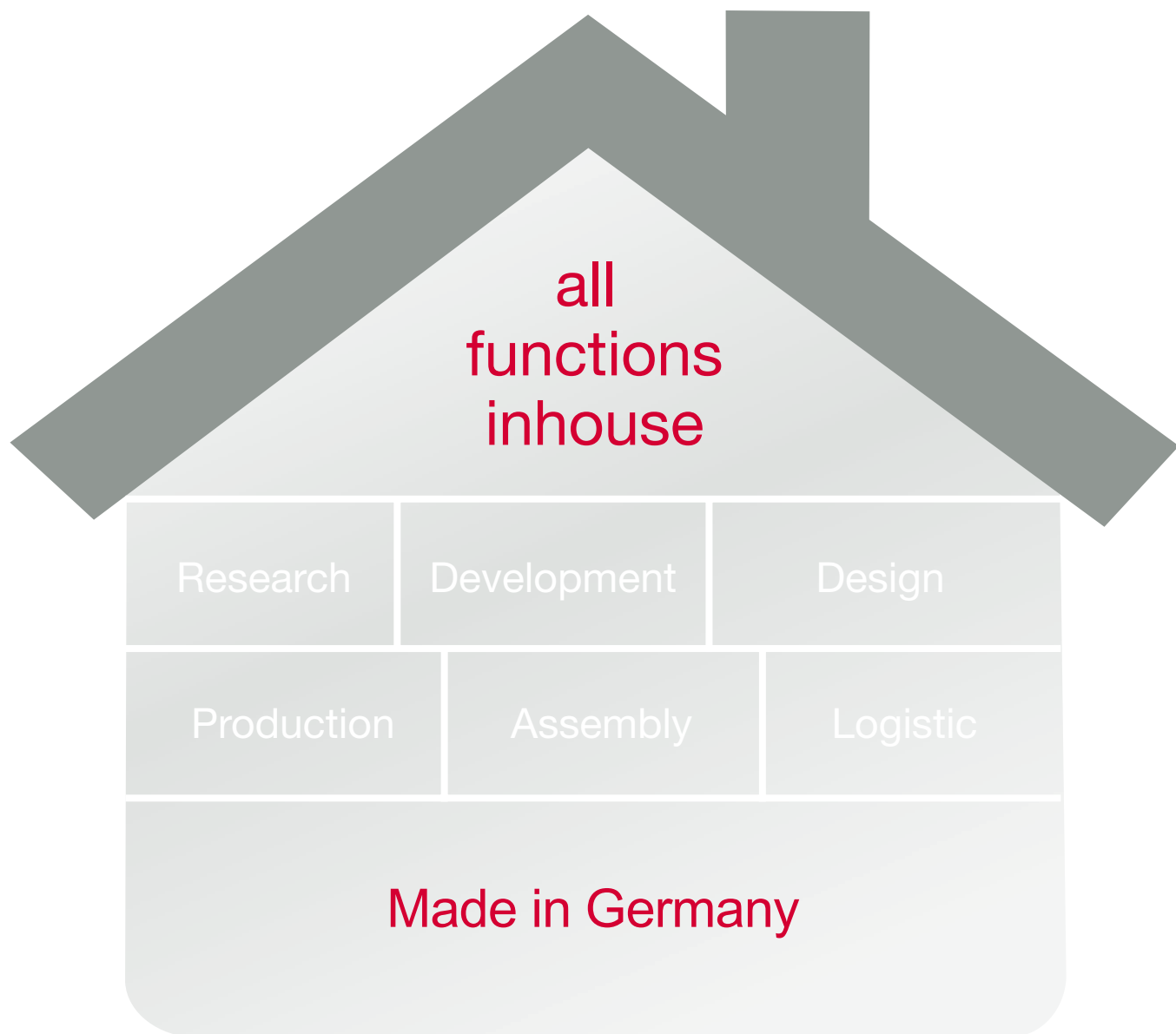
Watertight finish for concrete-surfaces

- 2 component epoxyresin
- free of solvents
- for dry surfaces
- special version for wet surfaces
- low viscosity
- universally usable

Field of Application:

Any concrete-surfaces, screeds
and stone

Optional with KTW-approval



our customer-service

Competence
Price
Quality
Deliverytime

...further products of DDL-Range

- Compact-Seals
- Pipe-Collars
- Casing-Endseals
- Sleeves
- Spacers/Insulators
- Flange-Gaskets (Rubber/Metal)
- Special Rubber Gaskets
- Double-Joints with collar
- Cable-Penetrations
- Tank-Penetrations
- Steel-Devices according to Spec DIN 18195 Part 9



DDL[®]

Durchführungstechnik
Dichtsysteme
Lutz

web www.ddl-dichttechnik.de
fon (+49) 07163 1657-40
fax (+49) 07163 1657-41
mail vertrieb@ddl-dichttechnik.de

... we set the standard !

